



CADDY CORPORATION

Food Service Equipment

Air Systems

PowerTurn Unloader

PowerTurn

Unloader



Description

The PowerTurn Unloader allows dish racks to make tightest 90° or 180° turn within 37-1/8" footprint at the dishwasher unloading side. It is ideal for small dishroom application since it allows flexibility in dishroom designs by conserving floor space. The PowerTurn Unloader is available in L-R, R-L, 90° and 180° models. The unit interconnects to any conveyor type dishwasher. The PowerTurn Unloader transports dish racks from the dishwasher onto a clean roller table. The clean roller table accumulates dish racks until the first dish rack activates the limit switch at the end. Both dishwasher and PowerTurn Unloader will stop when the limit switch is activated. The rollers are elevated allowing a quicker drying time for clean dishes.

PowerTurn Unloader

- 14-gauge stainless steel construction
- Attached to unloading side of a dishwasher by stainless steel bolts.
- System is interwired to a dishwasher; it runs when dishwasher runs.
- 90° turn knuckle belt conveyor's pivot-radius drive chain provides motive power to pull 20" x 20" dish racks around a tight radius so that overall dimension from end of dishwasher to far side of PowerTurn Unloader is approximately 39"
- The 90° turn makes a smooth transition to the roller table.
- Support structure made from 1-5/8" Ø stainless steel tubing with adjustable flange feet.

Clean Roller Table

- Comes with removable PVC roller sections
- Comes with a 14-gauge stainless-steel pan sloped to a drain
- Support structure made from 1-5/8" Ø stainless steel tubing with adjustable flange feet
- The accumulation switch is integrated with the dishwasher to shut machine off when a rack reaches the end of the table. Accumulation switch is supplied and pre-wired by Caddy. Final connection is by K.E.C..
- Overhead and/or under shelves for storage are available as options.
- Table length varies depending on its dish rack capacity: 1 rack, 2 rack, ..., 5 rack, etc.

PowerTurn Model #	PowerTurn Type	PowerTurn Dimensions (W x L x H)	Clean Roller Table Capacity	Clean Roller Table Dimensions (W x L x H)	O.A. Dimension (W x L x H)
PT-UL-90-CT2	90°	33-7/8" x 32-7/8" x 34"	2 Dish Rack	26" x 48" x 34"	33-7/8" x 80-7/8" x 34"
PT-UL-90-CT3			3 Dish Rack	26" x 66" x 34"	33-7/8" x 98-7/8" x 34"
PT-UL-90-CT4			4 Dish Rack	26" x 86" x 34"	33-7/8" x 118-7/8" x 34"
PT-UL-90-CT5			5 Dish Rack	26" x 106" x 34"	33-7/8" x 138-7/8" x 34"
PT-UL-90-CT6			6 Dish Rack	26" x 126" x 34"	33-7/8" x 158-7/8" x 34"
PT-UL-180-CT2	180°	55" x 35" x 34"	2 Dish Rack	26" x 48" x 34"	55" x 83" x 34"
PT-UL-180-CT3			3 Dish Rack	26" x 66" x 34"	55" x 101" x 34"
PT-UL-180-CT4			4 Dish Rack	26" x 86" x 34"	55" x 121" x 34"
PT-UL-180-CT5			5 Dish Rack	26" x 106" x 34"	55" x 141" x 34"
PT-UL-180-CT6			6 Dish Rack	26" x 126" x 34"	55" x 161" x 34"

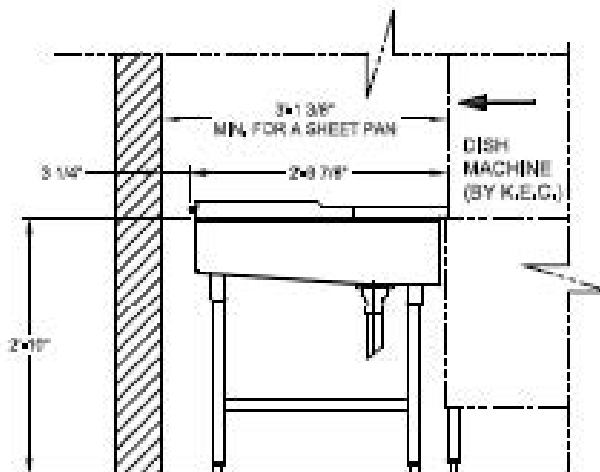
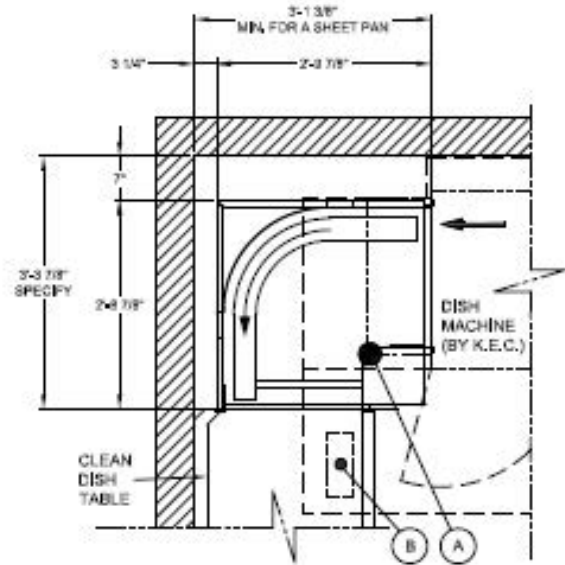
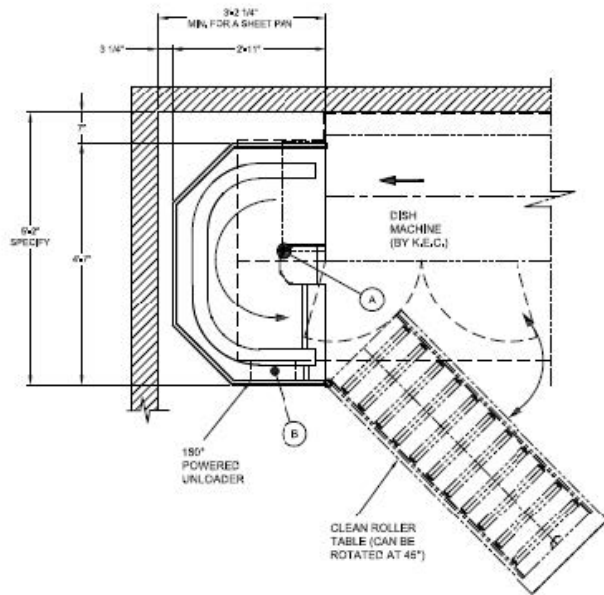


CADDY CORPORATION

509 Sharptown Road
 Bridgeport, NJ 08014-0345
 Tel: 856-467-4222
 Fax: 856-467-5511
 www.caddycorp.com

PowerTurn

Unloader



Typical Elevation View

WARNING:

Electrical and grounding connections must comply with the applicable portions of the National Electrical Code and/or other local electrical codes.

Plumbing connections must comply with applicable sanitary, safety, and plumbing codes.

ROUGH-IN SCHEDULE

SYM	DESCRIPTION
A	1 1/2" I.P.S. WASTE 12" A.F.F.
B	15A/208V/3Ø/60Hz 24" A.F.F.